



AC1200 Dual Band Wi-Fi 4G LTE Router

Share Your 4G LTE Network



Archer MR400



4G(TDD&FDD)/3G
Compatible



300 Mbps + 867 Mbps
Dual Band Wi-Fi*



MU-MIMO for
More Efficiency†

Highlights

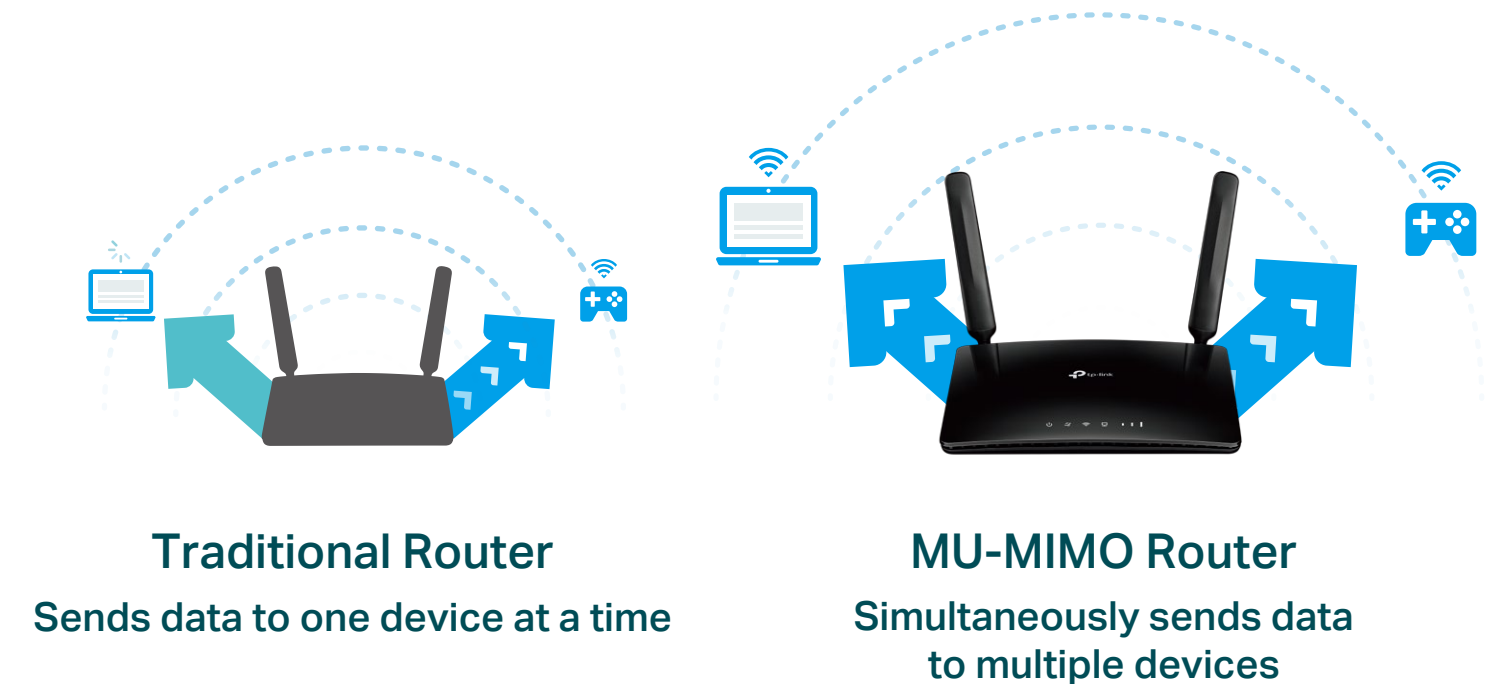
Superfast 4G LTE Speed & Stream-Ready AC Wi-Fi

The Archer MR400 uses 4G LTE technology to achieve speeds of up to 150 Mbps download and 50 Mbps upload. It also shares a simultaneous dual band Wi-Fi network with maximum speeds of 300 Mbps on 2.4 GHz and 867 Mbps on 5 GHz for gaming, streaming, file-sharing and more.



MU-MIMO for More Efficiency

MU-MIMO technology serves multiple devices at once, reducing wait time, increasing Wi-Fi throughput for every device, and making each stream more efficient.†



Highlights

Plug and Play

Simply insert your 3G/4G micro SIM card into the built-in slot, turn on the MR400 and start surfing.



More Devices, More Stability

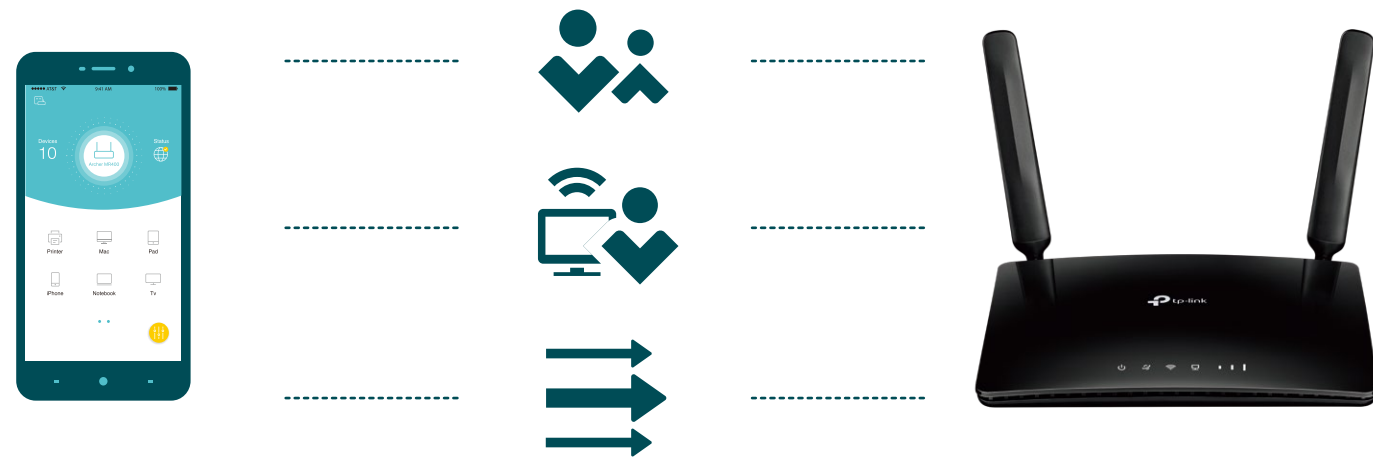
Connect up to 64 wireless devices with ease, thanks to a powerful Qualcomm processor that boosts data transfer speeds while ensuring dependable network stability.



Highlights

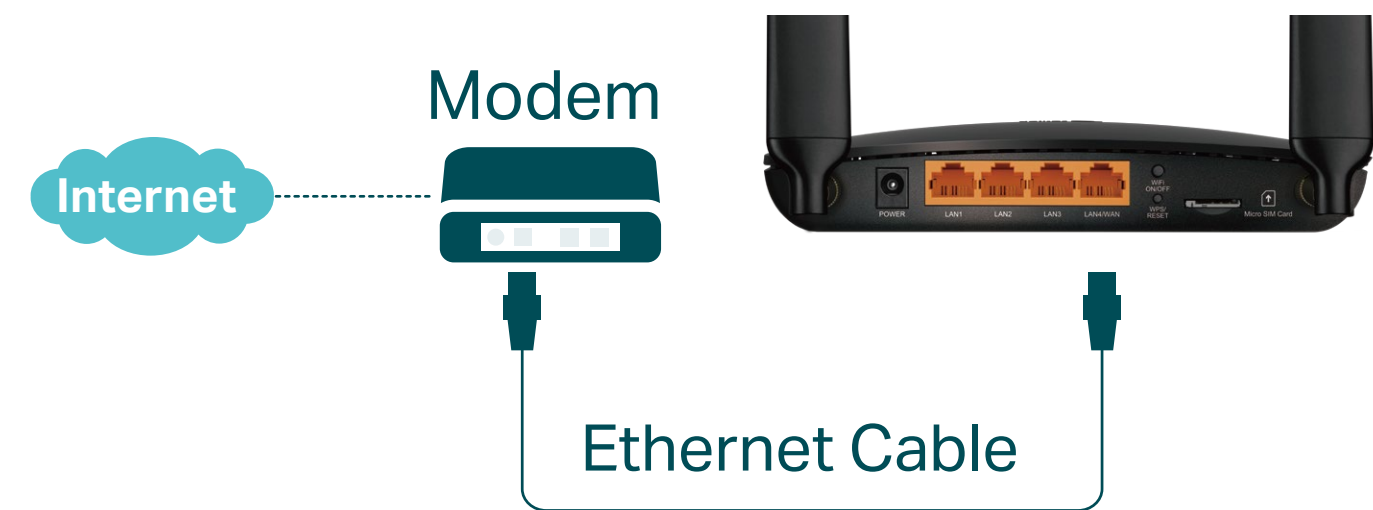
Simple Management

Parental Controls let you easily manage your kids by limiting access to Internet. Guest Network provides separate Wi-Fi access for guests while securing network. QoS assigns more bandwidth to preferred devices to ensure the quality of activities.

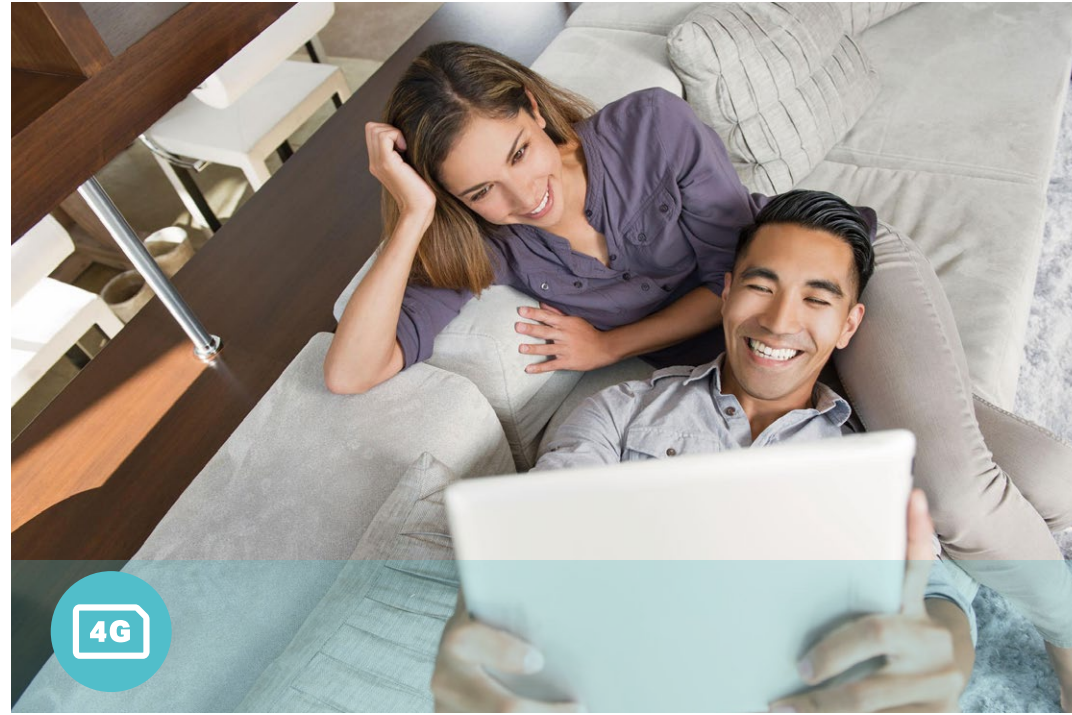


Flexible Connection

With a fully functional WAN/LAN port, Archer MR400 can work as a router which is compatible with cable, fiber, and DSL modems.



Features



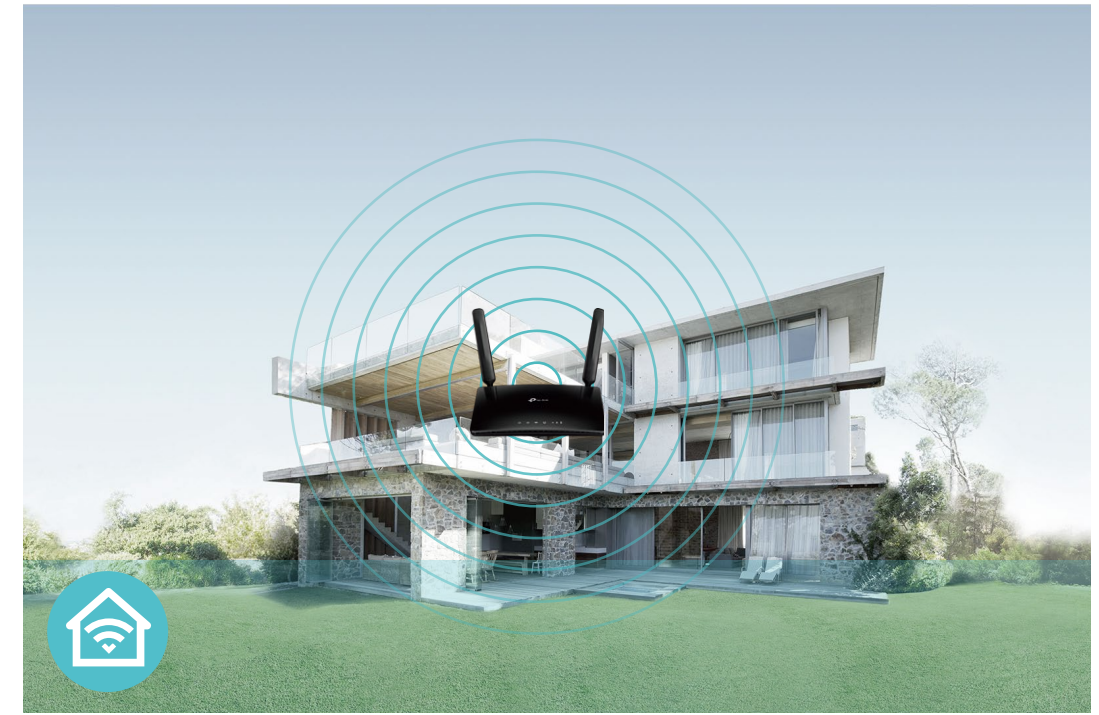
4G LTE

- 4G LTE – Ideal for cutting-edge 4G LTE network
- Backward Compatible – Compatible with 3G network



Wi-Fi Speed

- Superior Wireless Speed – Combined wireless speeds up to 300 Mbps over 2.4 GHz, and 867 Mbps over 5 GHz
- 802.11 ac Standard– Provides a data transfer rate 3 times faster than 802.11n for each stream



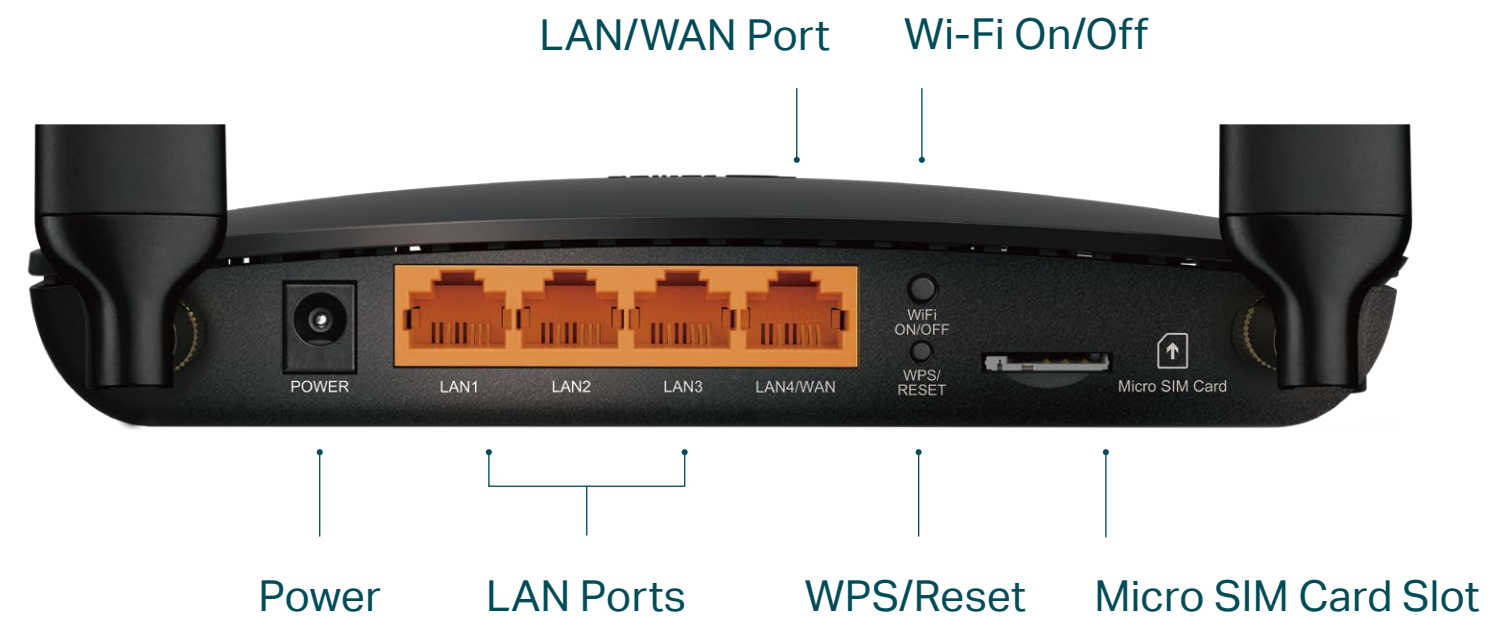
Wi-Fi Range

- Great Coverage – Better coverage with integrated Wi-Fi omnidirectional antennas

Specifications

Hardware

- Interface: 3 10/100Mbps LAN Ports, 1 10/100Mbps LAN/WAN Port, 1 Micro SIM Card Slot
- Buttons: WPS/RESET Button, Wi-Fi ON/OFF Button
- Antennas: 2 Detachable External 4G LTE Antennas
- External Power Supply: 12V/1A
- Dimensions (W x D x H): 6.85 × 4.9 × 1.32 in (174 × 124.5 × 33.5 mm)



Wireless

- Network Type
 - 4G: FDD-LTE B1/B3/B7/B8/B20 (2100/1800/2600/900/800 MHz)
 - TDD-LTE B38/B40/B41 (2600/2300/2500 MHz)
 - 3G: DC-HSPA+/HSPA+/HSPA/UMTS B1/B8 (2100/900 MHz)
- Wireless Standards: IEEE 802.11a/n/ac 5 GHz, IEEE 802.11b/g/n 2.4 GHz
- Frequency: 2.4 GHz and 5 GHz
- Signal Rate: 300 Mbps at 2.4 GHz, 867 Mbps at 5 GHz
- EIRP (CE): < 20 dBm (2.4 GHz), < 23 dBm (5 GHz)
- Reception Sensitivity:
 - 5 GHz:
 - 11a 54M: -77 dBm
 - 11ac VHT20 MCS0: -95.5 dBm
 - 11ac VHT40 MCS0: -93 dBm
 - 11ac VHT80 MCS0: -90 dBm
 - 11ac VHT20 MCS8: -73 dBm
 - 11ac VHT20 MCS9: -68 dBm
 - 11ac VHT20 MCS9: -65 dBm
 - 2.4 GHz:
 - 11g 54M: -74.5 dBm
 - 11n HT20 MCS0: -92 dBm
 - 11n HT40 MCS0: -89 dBm
 - 11n HT20 MCS7: -73 dBm
 - 11n HT40 MCS7: -70 dBm
- Wireless Function: Enable/Disable Wireless Radio, Wireless Schedule, WMM, Wireless Statistics
- Wireless Security: 64/128-bit WEP, WPA/WPA2, WPA-PSK/WPA2-PSK encryptions

Specifications

Software

- Operating Modes: 3G/4G Router, Wireless Router
- WAN Type: Dynamic IP/Static IP/PPPoE/PPTP(Dual Access)/L2TP(Dual Access)
- DHCP: Server, DHCP Client List, Address Reservation
- Quality of Service: Bandwidth Control
- Port Forwarding: Virtual Server, Port Triggering, UPnP, DMZ
- Dynamic DNS: DynDns, NO-IP
- VPN Server: PPTP VPN, OpenVPN
- Firewall Security: DoS, SPI Firewall, IP and MAC Address Binding
- Protocols: IPv4, IPv6
- Management: Access Control, Local Management, Remote Management, reboot schedule
- Guest Network: 2.4 GHz guest network x 1, 5 GHz guest network x 1

Others

- Certification:
CE, RoHS
- Requirements:
Microsoft Windows 98SE/NT/2000/XP/Vista™/7/8/8.1/10, MAC OS, NetWare, UNIX or Linux

Internet Explorer 11, Firefox 12.0, Chrome 20.0, Safari 4.0, or other Java-enabled browser

Micro SIM Card
- Environment:
Operating Temperature: 0°C~40°C (32°F ~104°F)
Storage Temperature: -40°C~70°C (-40°F ~158°F)
Operating Humidity: 10%~90% non-condensing
Storage Humidity: 5%~90% non-condensing
- Package Contents
AC1200 Wireless Dual Band 4G LTE Router Archer MR400

RJ45 Ethernet Cable

Power Adapter

Quick Installation Guide



For more information, please visit

https://www.tp-link.com/products/details/?model=Archer+MR400_V4

or scan the QR code left

Attention: This device may only be used indoors in all EU member states and EFTA countries.

Specifications are subject to change without notice. TP-Link is a registered trademark of TP-Link Technologies Co., Ltd. Other brands and product names are trademarks or registered trademarks of their respective holders. Copyright ©2020 TP-Link Technologies Co., Ltd. All rights reserved.

[†]Maximum wireless signal rates are the physical rates derived from IEEE Standard 802.11 specifications. Actual wireless data throughput and wireless coverage, and quantity of connected devices are not guaranteed and will vary as a result of network conditions, client limitations, and environmental factors, including building materials, obstacles, volume and density of traffic, and client location.

[‡]Use of MU-MIMO requires clients to also support MU-MIMO.

www.tp-link.com

TP-Link AC1200 Wireless Dual Band 4G LTE Router Archer MR400