

Peplink Premium Deck mounts



## Features

Rugged and heavy duty mounts are intended for deck and mast installations. The cable is protected inside the mount with direct feed through the deck or mast.

This mount is made from the highest quality Marine Grade Stainless Steel to withstand harsh weather conditions and prevent corrosion at sea.

## Ordering information

Product Code	Description
ACW-650	Adapter for HD Dome series
ACW-651	1" 14 TPI female to Mobility thread
ACW-652	1" 14 TPI male adapter
ACW-653	1 1/4" 11 TPI male adapter

## Application

- Deck Installations
- Mast Installations

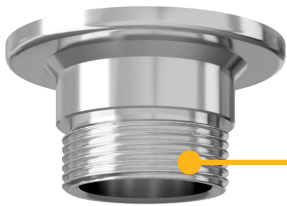
## Contact Us

[sales@peplink.com](mailto:sales@peplink.com)

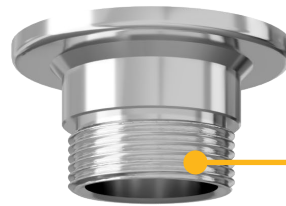
Find a Peplink Certified Partner

<https://www.peplink.com/peplink-certified-partners/>

# Overview



ACW-650



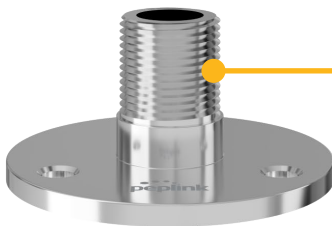
ACW-650



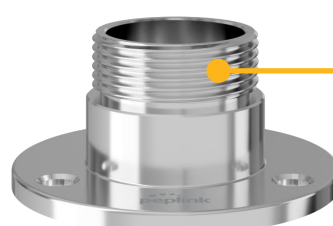
ACW-651



ACW-651



ACW-652



ACW-653

# Overview



Compatible with MAX HD Dome series

## Order Suggestion

ACW-650 + ACW-651 + ACW-653



Compatible with Mobility antenna series

## Order Suggestion

ACW-651 + ACW-653



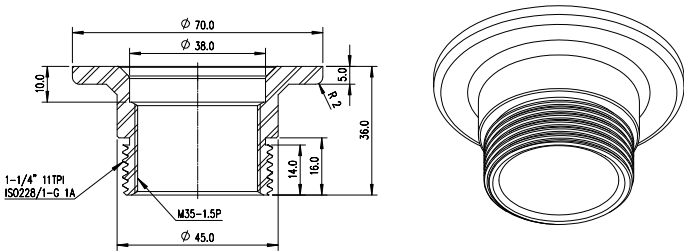
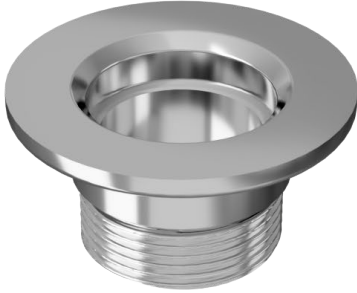
Compatible with Maritime antenna series

## Order Suggestion

ACW-652

\* The Deck Mount Set is included in the Maritime 40G Antenna Package.

# ACW-650



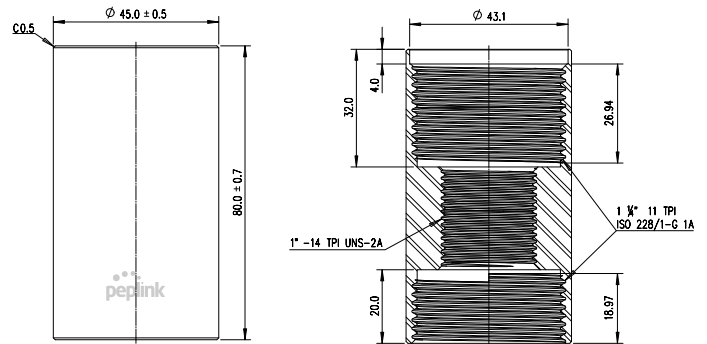
## Mechanical Specification

Material	Stainless Steel SS316
Internal thread	M35x1.5 (compliant with HD Dome)
External thread	1" 14 TPI (fits to ACW-651)
Dimensions HxD	1.42" x 2.76" (36 x 70mm)
Weight	220g / 0.49 pounds

## Ordering information

Product Code	Description
ACW-650	Adapter for HD Dome series

# ACW-651



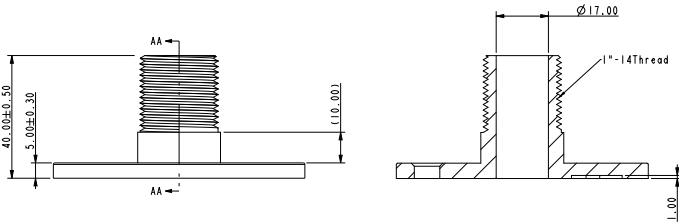
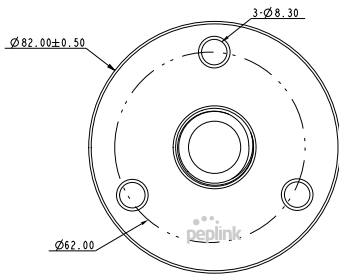
## Mechanical Specification

Material	Stainless Steel SS316
Internal thread 1 (Top and Bottom)	1 1/4" 11 TPI
External thread 2 (Bottom)	1" 14 TPI
Dimensions HxD	3.15" x 1.77" (80 x 45mm)
Weight	350g / 0.77 pounds

## Ordering information

Product Code	Description
ACW-651	1" 14 TPI female to Mobility thread

# ACW-652



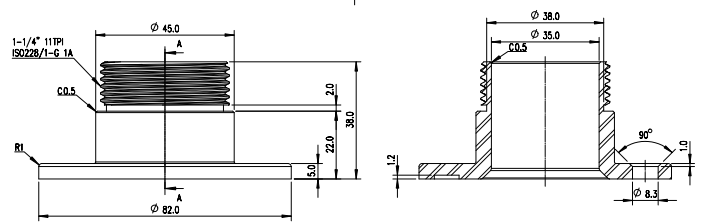
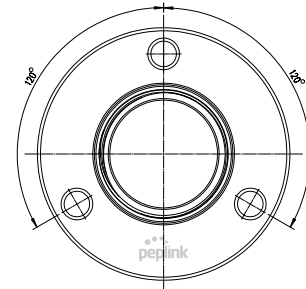
## Mechanical Specification

Material	Stainless Steel SS316
External thread	1" 14 TPI
Dimensions HxD	1.57" x 3.23" (40 x 82mm)
Weight	250g / 0.55 pounds

## Ordering information

Product Code	Description
ACW-652	1" 14 TPI male adapter

# ACW-653



## Mechanical Specification

Material	Stainless Steel SS316
External thread	1 1/4" 11 TPI
Dimensions HxD	1.50" x 3.23" (38 x 82mm)
Weight	270g / 0.60 pounds

## Ordering information

Product Code	Description
ACW-653	1 1/4" 11 TPI male adapter