

Highlights

Share internet from anywhere you have a 3G or 4G mobile connection

Compatible with iOS/Android smartphones, tablets, Windows/Mac laptops and other Wi-Fi enable devices.



* Compatible with LTE/HSPA+/HSUPA/HSDPA/UMTS/EVDO modem

Quick Mode Selection

Select an operation mode to best fit your internet need.

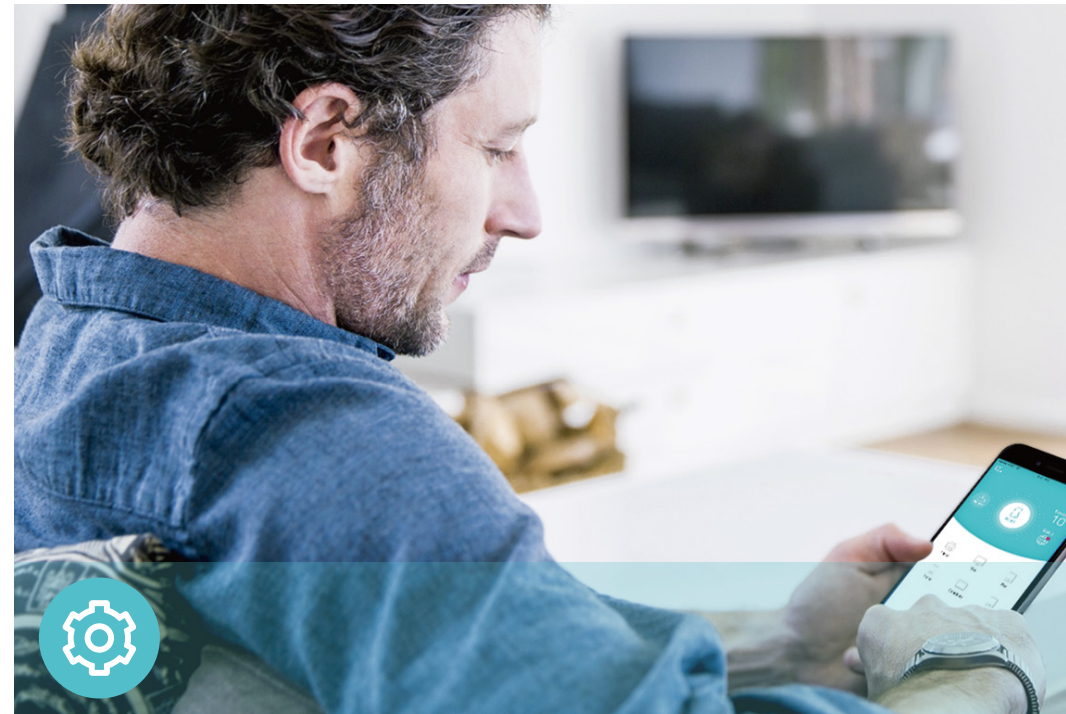


Features



Reliability

- Wireless N Speed – 300Mbps Wi-Fi speed meets your daily internet needs
- 802.11n – Backward compatible with 802.11b/g products
- Easy Bandwidth Management– Bandwidth Control allocates necessary speed of each connected device to ensure quality of multimedia streaming



Ease of Use

- Intuitive Web UI – Ensures quick and simple Installation without hassle
- Fast Encryption – One-touch WPA wireless security encryption with the WPS button



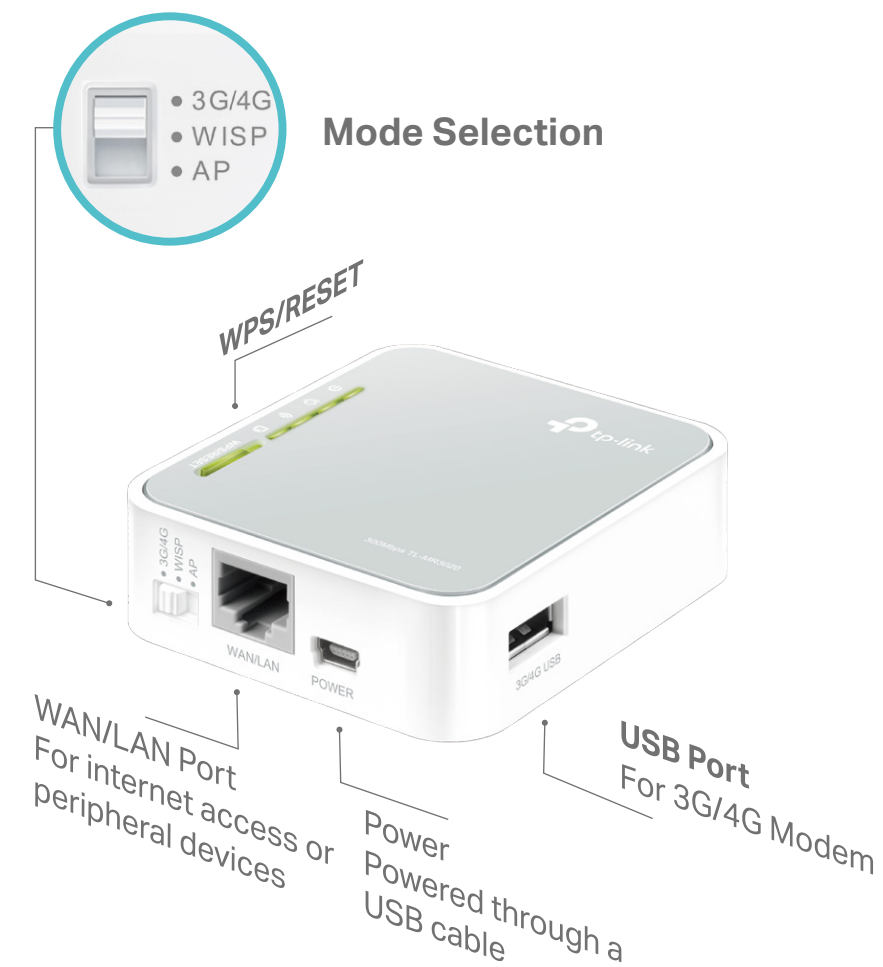
Security

- Guest Network – Keeps your main network secure by creating a separate network for friends and visitors
- Access Control – Establishes a whitelist or blacklist to allow or restrict certain devices to access the internet
- Parental Controls – Restricts internet access time and contents for children devices
- Encryptions for Secure Network – WPA-PSK and WPA2-PSK encryptions provide active protection against security threats

Specifications

Hardware

- Ports: 1 10/100Mbps WAN/LAN Port, 1 USB 2.0 Port, 1 mini USB Port
- Buttons: WPS/Reset Button, Mode Switch
- Antennas: Internal Antennas
- External Power Supply: 5VDC/1A
- Dimensions (W x D x H): 2.9× 2.6×0.9 in. (74×67×22mm)



Wireless

- Wireless Standards: IEEE 802.11b/g/n
- Frequency: 2.4GHz
- Signal Rate: 300Mbps
- Transmit Power: < 20dBm
- Reception Sensitivity:
2.4GHz:
270M: -70dBm@10% PER
130M: -73dBm@10% PER
108M: -74dBm@10% PER
54M: -75dBm@10% PER
11M: -86dBm@8% PER
6M: -92dBm@10% PER
1M: -95dBm@8% PER
- Wireless Function: Enable/Disable Wireless Radio, WMM, Wireless Statistics
- Wireless Security: 64/128-bit WEP, WPA/WPA2, WPA-PSK/WPA2-PSK encryptions

Specifications

Software

- Quality of Service: WMM, Bandwidth Control
- WAN Type: Dynamic IP/Static IP/PPPoE/PPTP(Dual Access)/L2TP(Dual Access)
- Management: Access Control, Local Management, Remote Management
- DHCP: Server, DHCP Client List, Address Reservation
- Port Forwarding: Virtual Server, Port Triggering, UPnP, DMZ
- Dynamic DNS: DynDns, NO-IP
- Access Control: Parental Controls, Local Management Control, Host List, White List, Black List
- Firewall Security: DoS, SPI Firewall, IP and MAC Address Binding
- Protocols: IPv4, IPv6
- Guest Network: 2.4GHz guest network

Others

- Certification:
CE, RoHS
- System Requirements:
Microsoft Windows 98SE/NT/2000/XP/Vista™/7/8/8.1/10, MAC OS, NetWare, UNIX or Linux

Internet Explorer 11, Firefox 12.0, Chrome 20.0, Safari 4.0, or other Java-enabled browser
- Environment:
Operating Temperature: 0°C~40°C (32°F ~104°F)
Storage Temperature: -40°C~70°C (-40°F ~158°F)

Operating Humidity: 10%~90% non-condensing
Storage Humidity: 5%~90% non-condensing
- Package Contents
3G/4G Portable Wireless N Router TL-MR3020

Power Supply Unit

Ethernet Cable

USB Cable

Quick Installation Guide



For more information, please visit

<http://www.tp-link.com/en/products/details/TL-MR3020.html>

or scan the QR code left

Attention: This device may only be used indoors in all EU member states and EFTA countries.

Specifications are subject to change without notice. TP-Link is a registered trademark of TP-Link Technologies Co., Ltd. Other brands and product names are trademarks or registered trademarks of their respective holders. Copyright ©2017 TP-Link Technologies Co., Ltd. All rights reserved.

TP-Link Technologies Co., Ltd.

Building 24 (floors 1, 3, 4, 5) and 28 (floors 1-4) Central Science and Technology Park, Shennan Rd, Nanshan, Shenzhen, China

www.tp-link.com

www.tp-link.com

TP-Link Portable 3G/4G Wireless N Router TL-MR3020