

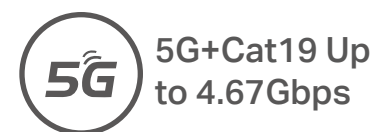


AX1800 Wireless Dual Band Gigabit Router

Enjoy 5G+ Speed Sharing Everywhere



Archer NX200



1201 Mbps+574 Mbps
Dual Band Wi-Fi*



EasyMesh
Compatible



Detachable LTE Antennas
for Better Performance

Highlights

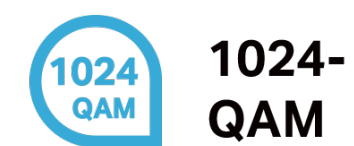
Superior 5G + 4G LTE Speed

5G greatly boosts the download speed up to 4.67 Gbps. It brings fast responsive network connections with only 1 ms latency. At the same time, NX200 is backward compatible with 4G mode.[†]



Powerful Wi-Fi 6

Archer AX1800 brings you incredibly fast dual-band speeds up to 3× faster than the previous AC generation of Wi-Fi, perfect for vivid 8K/4K streaming, intense online gaming, and more.



Highlights

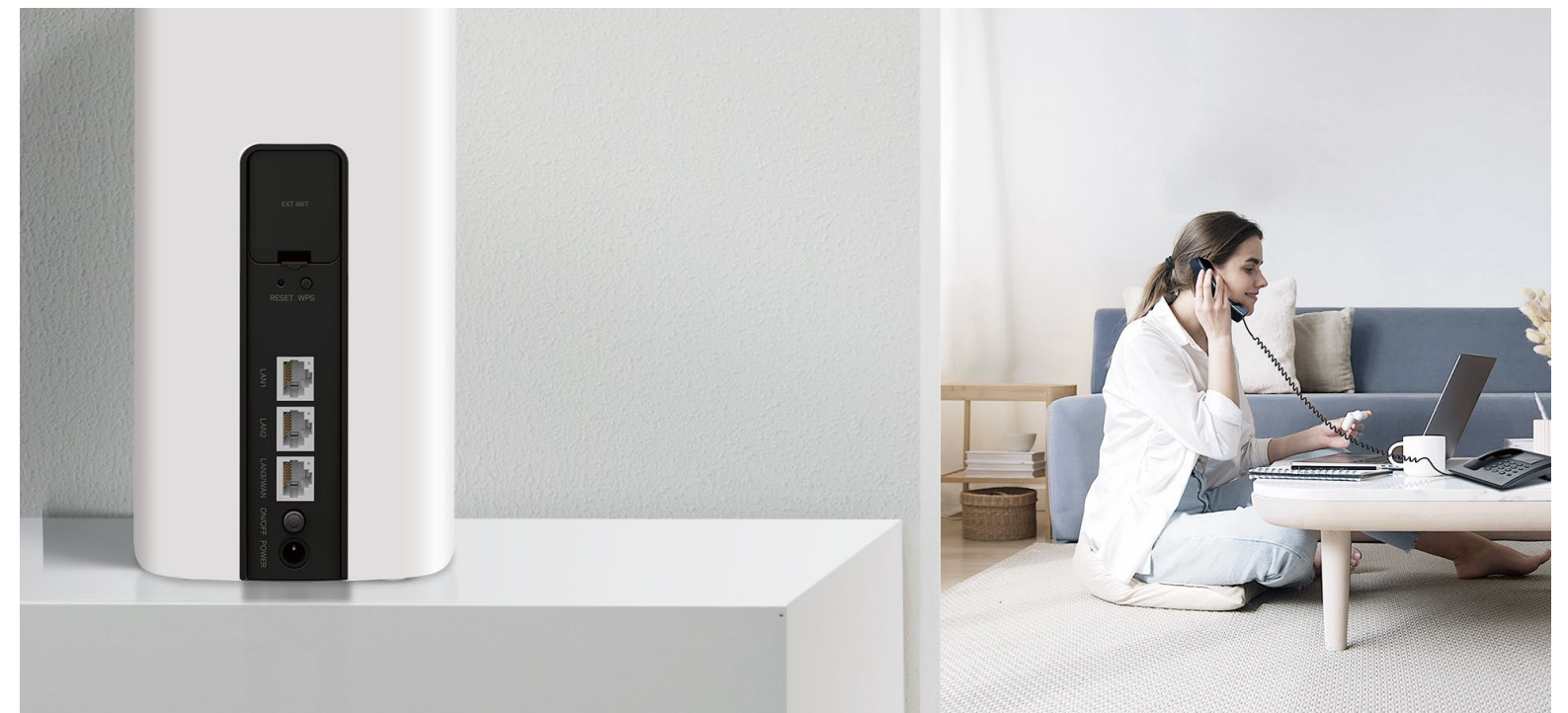
EasyMesh for Whole Home Coverage

The EasyMesh-compatible Archer NX200, can combine other APs together to form a powerful mesh Wi-Fi for full-home coverage and seamless roaming, eliminating Wi-Fi dead zones.

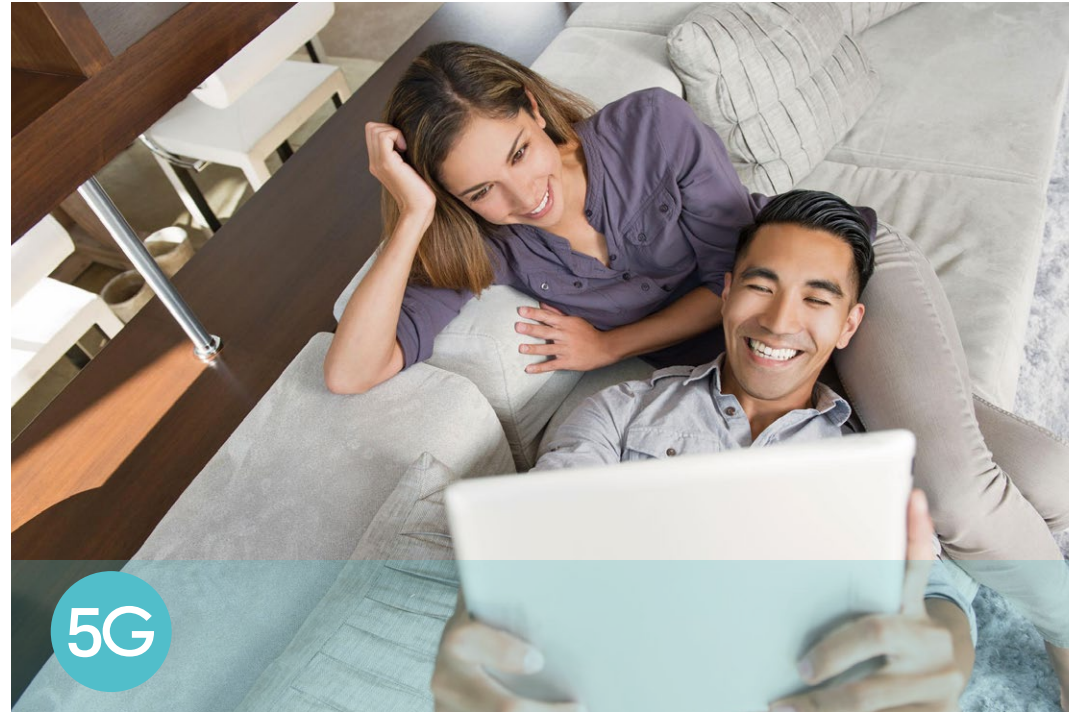


Better Signals for Connections Everywhere

Three Gigabit Ethernet ports ensure stable connectivity, while two antenna ports boost signal strength.†



Features



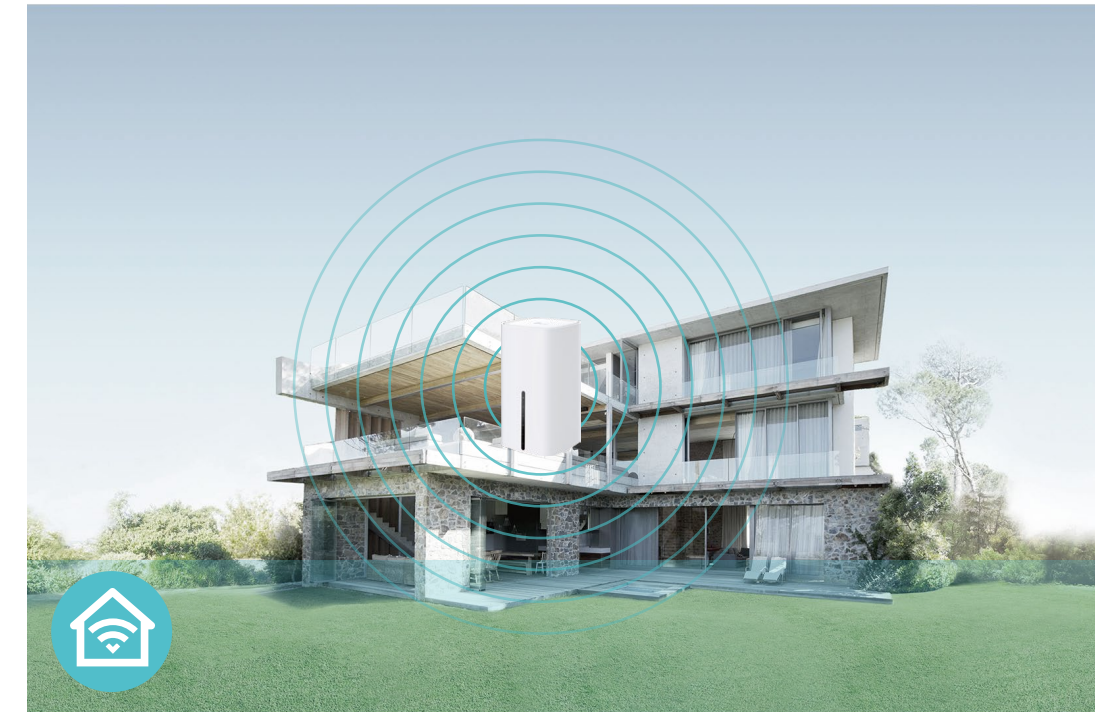
5G Network

- 5G – Ideal for cutting-edge 5G network
- Backward Compatible – Compatible with 4G network



Wi-Fi Speed

- Superior Wireless Speed – Combined wireless speeds up to 574 Mbps over 2.4 GHz, and 1201 Mbps over 5 GHz
- 802.11 ax Standard – Provides a data transfer rate 3 times faster than 802.11ac for each stream



Wi-Fi Range

- Great Coverage – Better coverage with integrated Wi-Fi omnidirectional antennas

Features



Reliability

- **Simultaneous Dual Band** – Separate Wi-Fi bands enable more devices to connect to your network without a drop in performance
- **Easy Bandwidth Management** – Advanced QoS makes it easier for you to manage the bandwidth of connected devices
- **Superior Stability** – Powerful processor enables you to connect up to 64 wireless devices with ease



Ease of Use

- **Intuitive Web UI** – Ensures quick and simple installation without hassle
- **Fast Encryption** – One-touch WPA wireless security encryption with the WPS button
- **Wi-Fi On/Off** – Conveniently turn on or off wireless radios as required
- **Hassle-free Management with Tether App** – Network management is made easy with the TP-Link Tether App, available on any Android and iOS device
- **Online Upgrade** – Keeps you informed of the latest firmware and allows online upgrade on the web UI



Security

- **Guest Network** – Keeps your main network secure by creating a separate network for friends and visitors
- **Access Control** – Establishes a whitelist or blacklist to allow or restrict certain devices to access the internet
- **Parental Controls** – Restrict internet access time and contents for your children's devices
- **Encryptions for Secure Network** – WPA, WPA2, and WPA3 encryptions provide active protection against security threats

Specifications

Hardware

- Interface: 2×Gigabit LAN Ports, 1×Gigabit LAN/WAN Port, 1×Nano SIM Card Slot, 2×SMA ports for 5G External Antennas, 1×Power port
- Buttons: Wi-Fi/RESET Button, Power Button, WPS Button
- Antennas: 2×Internal Wi-Fi Antennas, 8×Internal NR/LTE Antennas
- External Power Supply: 12V/2A
- Dimensions (W x D x H): 3.9 x 3.9 x 7.5 in (99 x 99x 190 mm)

Wireless

- Network Type
 - 5G: N1/N3/N5/N7/N8/N20/N28/N38/N40/N41/N77/N78
 - 4G: FDD-LTE:B1/B3/B7/B8/B20/B28(2100/1800/2600/900/800/700 MHz)
TDD-LTE: B38/B40/B41/B42/B43(2600/2300/2500/3500/3700 MHz)
 - 3G: DC-HSPA+/HSPA/UMTS:B1/B5/B8(2100/850/900 MHz)
- Wireless Standards: IEEE 802.11a/n/ac/ax 5 GHz, IEEE 802.11b/g/n/ax 2.4 GHz
- Frequency: 2.4 GHz and 5 GHz
- Signal Rate: 574 Mbps at 2.4 GHz, 1201 Mbps at 5 GHz
- EIRP (CE): < 20 dBm (2.4 GHz), < 23 dBm (5 GHz)
- Reception Sensitivity:
 - 5 GHz:
 - 11a 54M: -80 dBm
 - 11ax HE20: -68 dBm 11ax HE40: -65 dBm 11ax HE80: -62 dBm
 - 11ac VHT20: -76 dBm 11ac VHT40: -72 dBm 11ac VHT80: -68 dBm
 - 11n HT20: -79 dBm 11n HT40: -75 dBm
 - 2.4 GHz:
 - 11g 54M: -78 dBm
 - 11ax HE20: -65 dBm 11ax HE40: -62 dBm
 - 11ac VHT20: -73 dBm 11ac VHT40: -68 dBm
 - 11n HT20: -75 dBm 11n HT40: -72 dBm
- Wireless Function: Enable/Disable Wireless Radio, Wireless Schedule, WMM, Wireless Statistics
- Wireless Security: WPA/WPA2, WPA-PSK/WPA2-PSK, WPA3 encryptions

Specifications

Software

- Operating Modes: 3G/4G/5G Router, Wireless Router
- WAN Type: Dynamic IP/Static IP/PPPoE/PPTP(Dual Access)/L2TP(Dual Access)
- DHCP: Server, DHCP Client List, Address Reservation
- Quality of Service: Bandwidth Control
- Port Forwarding: ALG, Virtual Server, Port Triggering, UPnP, DMZ
- Dynamic DNS: TP-Link, DynDns, NO-IP
- VPN Server: PPTP VPN, IPsec VPN, OpenVPN
- Firewall Security: DoS, IPv4 SPI Firewall, IPv6 Firewall, IP and MAC Address Binding, Access Control
- Protocols: IPv4, IPv6
- Management: Access Control, Local Management, Remote Management, reboot schedule
- Guest Network: 2.4 GHz guest network x 1, 5 GHz guest network x 1

Others

- Certification:
CE, RoHS
- Requirements:
Edge, Firefox, Chrome, Safari, or other JavaScript-enabled browser
*You are recommended to use the latest version
Nano SIM Card
- Environment:
Operating Temperature: 0°C~40°C (32°F ~104°F)
Operating Humidity: 10%~90% non-condensing
Storage Humidity: 5%~90% non-condensing
- Package Contents
5G AX1800 Wireless Dual Band Gigabit Router Archer NX200
RJ45 Ethernet Cable
Power Adapter
Quick Installation Guide



For more information, please visit

https://www.tp-link.com/products/details/?model=Archer+NX200_V1

or scan the QR code left

†Maximum wireless signal rates are the physical rates derived from IEEE Standard 802.11 specifications. Actual wireless data throughput and wireless coverage, and quantity of connected devices are not guaranteed and will vary as a result of network conditions, client limitations, and environmental factors, including building materials, obstacles, volume and density of traffic, and client location.

©2023 TP-Link

www.tp-link.com

TP-Link 5G AX1800 Wireless Dual Band Gigabit Router Archer NX200