



Model: LT400

4G LTE

N300 Wi-Fi Router

- ✓ 4G LTE FDD & TDD
- ✓ 150Mbps LTE + 300Mbps Wi-Fi
- ✓ VPN Support



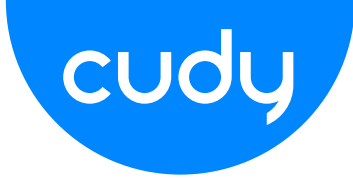


Enjoy Blazing Fast 4G LTE Network

Enjoy Blazing Fast 4G LTE and Wi-Fi Speed. LT400 uses the latest generation 4G LTE technology to reach speeds of up to 150Mbps in download and 50Mbps in upload. It also allows you to connect via Wi-Fi with a maximum speed of 300Mbps on 2.4GHz to enjoy gaming, streaming and much more.

Get Wi-Fi Where You Need It

Tested in the field for years to ensure universal compatibility with 4 advanced antennas to deliver a smooth connection. Simply plug in a SIM card and power on this elegant piece of technology to utilize fast and stable Wi-Fi, whether you're at home or working remote.



Plug and Play

With an integrated 4G LTE modem and a built-in SIM card slot, all you need to do is insert a nano SIM card and turn on the router. Enjoying fast, stable Wi-Fi on a 4G LTE network has never been easier.

Flexible WAN/LAN Port

The WAN/LAN port can be configured as a WAN or LAN port. When working on LAN mode, LT400 is just a normal 4G LTE router. While working on WAN mode, LT400 can maintain 4G and WAN connections at the same time, and provide Internet preferentially from wired ports to reduce 4G mobile data tariffs.



Mobile Phone Laptop Desktop Game Console SIM Card

Interface

- 1 x 10/100Mbps WAN/LAN Port
- 3 x 10/100Mbps LAN Ports
- 1 x Power Jack
- 1 x SIM Card Slot

LED Indicators

- 4G
- WiFi
- LAN1~LAN3
- WAN/LAN
- INTERNET
- Power

Software



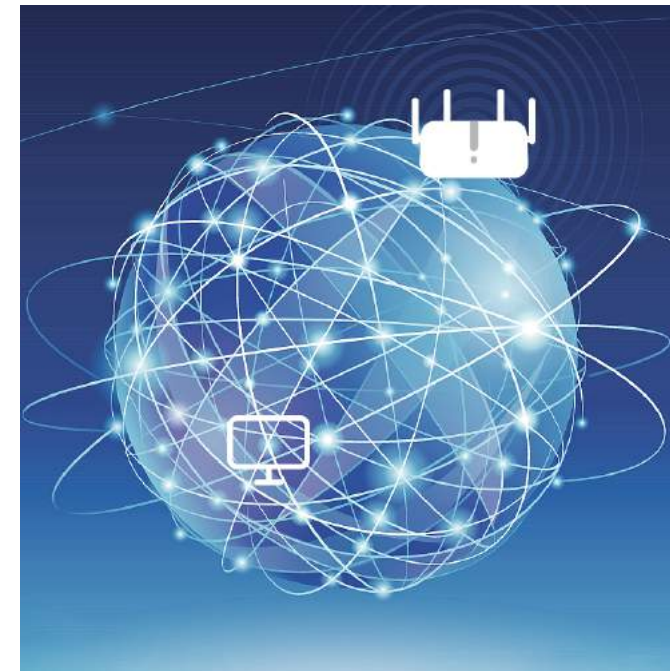
FDD+TDD

Support FDD and TDD, meet the needs of various ISPs and provide a good user experience for customers. Support most cellular operators around the world.



VPN

With built-in VPN, this router can easily establish a connection to VPN Server to transport all your online data and traffic, securing it with its encryption at the same time.



DDNS

By assigning a custom domain name to your home router's IP address, DDNS function will update automatically as your home IP continues to change. Compatible with 15 more DDNS providers.



Guest Network

Guest Network separates guest access from your family network. Maintain high security across your network to help ensure your privacy is safe while online.

Specifications

- Up to 150Mbps/50Mbps LTE speed
- Up to 300Mbps WiFi speed
- Support VPN for security connections
- Support 15+ DDNS for remote management
- 4G watchdog can automatically redial when disconnected
- WiFi schedule supports configuration of available WiFi time
- Flexible WAN/LAN port for dual connectivity

Hardware Specification

DRAM	512Mbit (64MB) DDR
FLASH	64Mbit (8MB) SPI Flash
Interface	3 x RJ45 10M/100M LAN Ethernet interfaces
	1 x RJ45 10M/100M LAN/WAN Ethernet interface
	1 x Reset Button
	1 x Nano SIM Slot
Antenna	2.4G (802.11n): 2T2R 4G: 2T2R
Gain	5dBi
Frequency	2.412-2.4835GHz
LED	PWR, WIFI, 4G, LAN1-LAN3, WAN/LAN
Transmit Power	11b: 1/2/5.5/11Mbps
	11g: 6/9/12/18/24/36/48/54Mbps
	11n: 300Mbps (MAX)
Spread-spectrum technique	DSSS
Data Encryption	WPA-PSK/WPA2-PSK, WPA/WPA2
Modulation type	11b: CCK, QPSK, BPSK
	11g: OFDM
	11n: QPSK, BPSK, 16-QAM: 64-QAM
Media access protocol	CAMA/CA with ACK
LTE Frequency Bands	LTE-FDD: B1/B3/B5/B7/B8/B20/B28
	LTE-TDD: B38/B40/B41
EU Version	WCDMA: B1/B5/B8
	GSM/EDGE: B3/B8



Software Features

WAN Type	4G/Dynamic IP/Static IP/PPPoE
DHCP	Server, DHCP Client List, Address Reservation
Dynamic DNS	Compatible with 15 more DDNS providers.
NAT	Port Forwarding, Port Triggering, UPnP, DMZ
VPN	PPTP/L2TP/OpenVPN/WireGuard
CWMP Protocol	TR069 / TR098 / TR111 / TR181
ACS Server Compatibility	GenieACS, OpenACS
Management	Access Control, Local Management, Remote Management, Wake on LAN
TTL	Extend/Spoof/Custom
DNS	Cloudflare/Google/NextDNS/Custom
Internet Protocols	IPv4 / IPv6
IPv6	Relay Dynamic(SLAAC/DHCPv6) Static (Fixed IP) Passthrough MAP-E (Dual-stack) DS-Lite (Dual-stack)
4G Band Lock	Support

Wireless Features

Wireless Standards	IEEE 802.11n/b/g 2.4 GHz
Frequency	2.4GHz
Signal Rate	300Mbps (2.4GHz) Compatible with 802.11a/b/g/n Wi-Fi standards
Transmit Power	CE: <20dBm FCC: <30dBm
Wireless Modes	Enable/Disable Wireless Radio, WMM
Wireless Security	WEP, WPA/WPA2, WPA-PSK/WPA2-PSK

Others

Package	4G LTE WiFi Router
Contents	Power Adapter RJ45 Ethernet Cable Quick Installation Guide
System Requirements	Microsoft Windows 98SE/NT/2000/XP/Vista™/7/8/8.1/10/11, MAC OS, NetWare, UNIX or Linux Internet Explorer 11, Firefox 12.0, Chrome 20.0, Safari 4.0, or other Java-enabled browser Subscription with an internet service provider (for internet access)

CE DECLARATION OF CONFORMITY

For the following equipment:

Product Name: 300 Mbps Wireless N 4G LTE Router

Model Number: LT400

Trademark: Cudy

We declare under our own responsibility that the above product satisfies all the technical regulations applicable to the product within the scope of Council Directives:

Directive 2014/53/EU, Directive 2011/65/EU, Directive (EU) 2015/863

The above product is in conformity with the following standards or other normative documents:

EN 301 489-1 V2.2.3 EN 301 489-17 V3.2.4 EN 301 489-52 V1.2.1

EN 55032: 2015+A11:2020

EN 55035: 2017+A11:2020

EN50663: 2017 EN50566: 2017

EN62209-2: 2010+A1:2019

EN 62479: 2010

EN 300 328 V2.2.2 ETSI EN 301 893 V2.1.1

EN 301 908-1 V15.1.1 EN 301 908-13 V13.2.1

EN IEC 62368-1: 2020+A11: 2020

IEC 62321-1:2013, IEC 62321-2:2021,

IEC 62321-3-1:2013, IEC 62321-5:2013,

IEC 62321-4:2013+AMD1:2017 CSV,

IEC 62321-6:2015, IEC 62321-7-1: 2015,

IEC 62321-7-2:2017, IEC 62321-8:2017

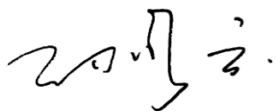
Person responsible for making this declaration:

Sun Qiaoyun

Regulatory Compliance Manager

Place of issue: Shenzhen, China

Date of issue: 2022-8-23



Shenzhen Cudy Technology Co., Ltd.

Room A606, Gaoxinqi Industrial Park, Liuxianyi Road, Baoan District, Shenzhen, China

www.cudy.com

ΔΗΛΩΣΗ ΣΥΜΜΟΡΦΩΣΗΣ

Για τον ακόλουθο εξοπλισμό:

Όνομα Προϊόντος: 300 Mbps Wireless N 4G LTE Router

Αριθμός Μοντέλου: LT400

Εμπορικό Σήμα: Cudy

Διακηρύσσουμε με κάθε ευθύνη ότι το παραπάνω προϊόν συμμορφώνεται με όλους τους τεχνικούς κανονισμούς που ισχύουν για το προϊόν, εντός του αντικειμένου των Κοινοτικών

Οδηγιών:

Οδηγία 2014/53/ΕΕ, Οδηγία 2011/65/ΕΕ, Οδηγία (ΕΕ) 2015/863

Το παραπάνω προϊόν βρίσκεται σε συμμόρφωση με τα ακόλουθα πρότυπα ή άλλα έγγραφα συμμόρφωσης

EN 301 489-1 V2.2.3 EN 301 489-17 V3.2.4 EN 301 489-52 V1.2.1

EN 55032: 2015+A11:2020

EN 55035: 2017+A11:2020

EN50663: 2017 EN50566: 2017

EN62209-2: 2010+A1:2019

EN 62479: 2010

EN 300 328 V2.2.2 ETSI EN 301 893 V2.1.1

EN 301 908-1 V15.1.1 EN 301 908-13 V13.2.1

EN IEC 62368-1: 2020+A11: 2020

IEC 62321-1:2013, IEC 62321-2:2021,

IEC 62321-3-1:2013, IEC 62321-5:2013,

IEC 62321-4:2013+AMD1:2017 CSV,

IEC 62321-6:2015, IEC 62321-7-1: 2015,

IEC 62321-7-2:2017, IEC 62321-8:2017

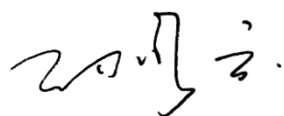
Υπεύθυνος για τη δήλωση αυτή:

Sun Qiaoyun

Διευθυντής κανονιστικής συμμόρφωσης

Τόπος έκδοσης: Shenzhen, Κίνα

Ημερομηνία έκδοσης: 2022-8-23



Shenzhen Cudy Technology Co., Ltd.

Room A606, Gaoxinqi Industrial Park, Liuxianyi Road, Baoan District, Shenzhen, China

www.cudy.com