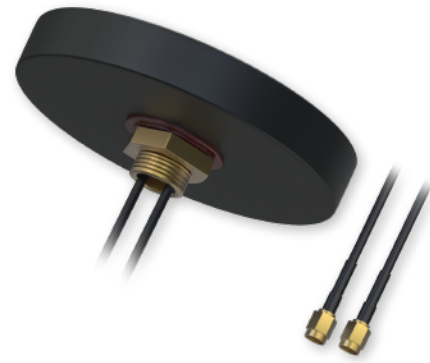


COMBO MIMO MOBILE ROOF SMA ANTENNA



TECHNICAL DATA

MECHANICAL/ENVIRONMENTAL

Mounting method	Screw
Radome ingress protection rating	IP65 (exclude cable outlet)
Radome material	UV resistant plastic and cable
Housing dimensions	Ø 81.3 x 15.2 mm
Cable	2x RG174, 3000 mm
Operating temperature	-40 ~ +85 °C
Weight	157 ± 10 g
UV resistance	✓
RoHS Compliant	✓

LTE ANTENNA

Frequency range	698 - 960, 1710 - 2690 MHz
Polarization	Linear
Main antenna gain	2.5 dBi
Aux antenna gain	2.0 dBi
V.S.W.R	<3.0
Impedance	50 Ω
Connector type and count	2x SMA Male

